



# Housing Guide

Published Oct. 17th 2008

Email: [hildek@mi.edu](mailto:hildek@mi.edu) Phone: (323) 860-1185

Hello, and welcome to Musicians Institute! The Housing Office is committed to providing you with up-to-date information regarding housing and other services that will make your transition to Hollywood as smooth as possible.

### **Finding a Place to Live: How We Can Help**

The Housing Office provides information regarding apartment vacancies, apartment prices, areas to search, and roommate referrals. We are in regular contact with many of the landlords/owners of apartments in the immediate area. In the back of this housing guide you will find a list of these apartments; feel free to contact the managers regarding vacancies. You can also search the Internet for apartments in Hollywood and other areas of Los Angeles, but keep in mind that it may take two weeks or more to secure an apartment, so be patient.

### **Moving in with Current Students**

The Housing Office keeps lists of current students with rooms for rent. This is an excellent way to get settled fast and save on expenses.

### **Finding Roommates**

Joining up with other new students to rent housing is another great way to meet people while keeping your costs down. The Housing Office maintains a list of new students looking for roommates. To be included on this list, please call or send an email to the Housing Office; we will add your name and send a complete list back to you prior to your start date (it is your responsibility to contact other students on the list and make arrangements for finding joint housing).

### **Know Your Responsibilities**

A comfortable living situation is a vital part of successful student life. While we will make every effort to assist you, remember that it is ultimately your responsibility to secure housing. The Housing Office is a courtesy service and we do not independently investigate, endorse or guarantee any information provided by third parties. Allow time to choose roommates and apartments carefully and read all agreements and leases before you sign. If you have questions about a lease agreement, we can help you understand it.

All of us at the Housing Office look forward to working with you and we will do our best to help make your M.I. experience the best time of your life!

Keep in mind this is only a guide. Lease rates and guidelines are provided as a suggestion or estimate. Musicians Institute is not liable for any results due to these guidelines.

# Table of Contents

Introduction.....	2
Table of Contents.....	3
Hotel and Hostel Listings.....	4
Housing Tips.....	6
Frequently Asked Questions.....	10
Apartment Listings.....	13
Home Stay & Phone Listings.....	19
Map of Hollywood.....	20
Type of Units in Apartments.....	21
Management Company Listings.....	22

# Hotels and Hostels

Mainly for short-term lodging after you arrive in Hollywood and before you secure permanent housing. All rates quoted are for Musicians Institute Students. **Rates are subject to change without notice and MI cannot guarantee their accuracy.**

## Highland Gardens Hotel

7047 Franklin Ave.  
Hollywood, CA 90028  
(323) 850-0536  
(323) 850-1712 Fax  
www.highlandgardenshotel.com  
\$89 – single  
\$99 – double  
\$109 – triple  
Monthly rates starting @ \$1300/mo.

## Hollywood Heights Hotel

2005 N. Highland Ave.  
Hollywood, CA 90068  
(323) 850-5811  
(323) 876-3272 Fax  
\$139/night  
\$20/night for parking

## Orange Drive Manor Hostel

1764 N. Orange Dr.  
Hollywood, CA 90028  
(323) 850-0350  
www.orangedrivehostel.com  
\$25-\$29 dorm  
\$59-\$65 single  
\$55-\$69 double

## Magic Castle Hotel

7025 Franklin Ave.  
Hollywood, Ca 90028  
(800) 741-4915  
(323) 851-0800  
www.magiccastlehotel.com  
\$174 single  
\$334 EX2BD Suite  
\$244 DLX Suite

## Best Western Hollywood plaza

2011 N. Highland Ave.  
Hollywood, CA 90068  
(800) 445-4353  
(323) 851-1800  
\$139 - \$199 / night

## Liberty Hotel

1770 Orchid Ave.  
Hollywood, CA 90028  
(323) 962-1788  
www.hollywoodlibertyhotel.com  
\$119– single  
\$129 – double  
\$139 – triple

## USA HOSTELS

1624 Schrader Blvd.  
Hollywood, CA 90028  
(323) 462-3777  
hollywood@usahostels.com  
www.usahostels.com/hollywood  
\$26-29 (dorm style)  
\$78 (private room)  
\$68 (semi private room)  
\$169+ weekly rate  
2 weeks max stay

## Hollywood Roosevelt

7000 Hollywood Blvd.  
Hollywood, CA 90028  
(800) 950-7667  
(323) 466-7000  
(323) 462-8056 Fax  
www.hollywoodroosevelt.com  
\$200-\$700/night

## Days Inn Hollywood Hotel

7023 Sunset Blvd.  
Hollywood, CA 90028  
(800) 346-7723  
(323) 464-8344  
\$119.95+/night with continental breakfast  
\$129.95+/night for double occupancy

## Hollywood Celebrity Hotel

1775 Orchid Ave.  
Hollywood, CA  
(323) 850-6464  
www.hotelcelebrity.com  
\$129 + /Night

**Renaissance Hollywood Hotel**

1755 N. Highland Ave.  
 Hollywood, CA 90028  
 (800) 769-4774  
 (323) 856-1200  
 (323) 856-1205 Fax  
[www.renaissancehollywood.com](http://www.renaissancehollywood.com)  
 \$349 + / night  
 \$29 / valet parking

**Best Inn**

1822 N. Cahuenga Blvd.  
 Hollywood, CA 90028  
 (323) 467-2252  
 (323) 876-3272 Fax  
 \$80-\$90 / night  
 free parking

**Quality Inn Hollywood**

1520 N. La Brea Ave.  
 Hollywood, CA 90028  
 (323) 464-3243  
 (323) 463-8115 Fax  
[www.orangedrivehostel.com](http://www.orangedrivehostel.com)  
 \$139 / night

**Vibe Hotel**

5920 Hollywood Blvd.  
 Hollywood, Ca 90028  
 (866) 751-8600  
 (323) 469-8600  
 (323) 469-6200 Fax  
[www.vibehotel.com](http://www.vibehotel.com)  
 \$65-\$85 / night  
 \$406-\$539 weekly rates  
 Free parking

**Hollywood Orchid Suites**

1753 Orchid Ave.  
 Hollywood, CA 90028  
 (800) 537-3052  
 (323) 874-9678  
 (323) 874-9931 Fax  
 \$109-\$259 / night (internet rates)

**Holiday Inn**

4222 Vineland Ave.  
 North Hollywood, CA 91602  
 (818) 980-8000  
 (818) 766-0112 Fax  
 \$139 / night

**Cecil Hotel**

640 S. Main Street  
 Los Angeles, CA 90014  
 (800) 896-5294  
 (213) 624-4545 ext. 6205  
 (213) 624-8803 Fax  
[www.thececilhotel.com](http://www.thececilhotel.com)  
 \$650-\$850 / month  
 Extended stays available

**Chateau de Soleil**

11621 Burbank Blvd.  
 North Hollywood, CA 91601  
 (818) 760-5350  
[www.chateaudesoleil.com](http://www.chateaudesoleil.com)  
 \$175-\$500 / week  
 Monthly rates starting @ \$650  
 Extended stays & student  
 discounts available

**Hollyworld Palms Studio Apt.**

3234 Barham Blvd.  
 Universal City, CA 90068  
 (323) 851-5373  
[www.hollyworldpalms.blogspot.com](http://www.hollyworldpalms.blogspot.com)  
 \$89 / night  
 Weekly rates \$599  
 Extended stays available

# HOUSING TIPS

Just as when you make any purchase, you must do some research in order to be good consumer and find the best housing deals.

## WHEN TO LOOK FOR HOUSING

Because specific information regarding the availability of apartments is always changing, we strongly recommend that students begin looking for housing no sooner than one month prior to their scheduled enrollment date. Most students choose to live within walking distance to school, and there are many housing opportunities available for incoming students in the surrounding area.

## STUDY THE DIFFERENCE IN HOUSING COSTS

The Rental Rate survey, provided by Musicians Institute, gives you costs by area, unit, and size. Compare the types of housing available. Also study classified ads. If you are sharing an apartment, expect to spend at least \$500.00 to \$750.00 a month per person for rent. (more if you want to live alone).

## THINK BEFORE YOU RENT!

If you are sharing housing, compare your budget with that of your roommate(s). Don't get in over your head! Determine your personal need for physical and psychological space. Don't make compromises that you cannot live with.

## HOW TO START LOOKING

It is extremely helpful to use a checklist or a small notebook to keep track of your listings. Collecting information on separate scraps of paper makes it difficult to compare units you have visited.

## MAKE AN APPOINTMENT

Landlords can get upset if you just pop in. If you will be late or have to cancel, be sure to call and let the landlord know ahead of time.

## LOOK PRESENTABLE

Be clean and neat in your appearance. Often, the manager will judge how well you will take care of your housing by your personal cleanliness.

## WALK AROUND THE AREA

Walk, rather than drive, to units in a particular area. Walking gives you a much better opportunity to explore the neighborhood. Visit again in the evening or over the weekend for a better picture of the area.

## MAKE AN INFORMED DECISION

Make sure you are completely comfortable and informed before you sign a lease. If the landlord makes any oral promise that is not in the agreement, get it in writing! Keep a copy with your lease and give a copy to the landlord.

## LEARN HOW TO READ AND NEGOTIATE A LEASE WITH A LANDLORD

Most apartments will require you to sign some kind of lease. You will need to understand your rights and responsibilities as a tenant. Carefully review any documents before signing them. You may not be able to back out of a lease after you have signed it. If you need help in understanding your lease, bring the document to the Housing Office and we will generally explain what things mean. **M.I. EMPLOYEES ARE NOT QUALIFIED TO OFFER AND DO NOT PROVIDE LEGAL ADVICE!** Included in this guide is contact information for the Legal Aid Foundation of Los Angeles, who may assist you if you have a legal problem and cannot afford a private attorney.

# MOVING IN

## MAKING YOUR NEW PLACE A HOME

At last, you've found a place to live!! Whether it's a dream house or a simple efficiency apartment, the challenge now is to make these empty rooms your own. The following are some tips on turning your new house or apartment into a home.

## UTILITY HOOK-UPS

Most apartments in Hollywood include water usage in the rent. Other utilities vary; your lease agreement should specify what you're responsible for in addition to rent. To turn on utilities after you move in:

**Gas:** Contact the Southern California Gas Company, 1-800-427-2200, if you need to turn on gas for cooking or heating.

**Electricity:** Contact the Department of Water and Power, 1-800-310-2355.

**Land-line Telephone Service:** Contact SBC at 1-800-342-5397. Telephone companies are extremely busy just before the beginning of the academic year, so place your request for a phone connection as far in advance of moving in as possible.

## FURNISHINGS

The gas and electricity are turned on and the telephone works - now you need to collect some furniture, linens and kitchen utensils. Here's how to do it so without spending a fortune:

**Classified Ads:** the Recycler and Craig's List offer popular online options

**Garage/Yard sales:** one of the quickest ways to acquire cheap, useable goods. One man's trash is another man's treasure.

**Flea Markets:** where bargaining is still a respected skill. Some of the more popular markets are Pasadena Rose Bowl, Marina Del Rey, and Melrose/Fairfax (Sundays).

**Thrift Stores:** a ready source for used clothing, furniture and housewares. Check the Yellow Pages under "Thrift Shops" or "Second Hand dealers" for a complete list.

**Rental Furniture** is available to help get a brand new household going or for short-term stays.

**MI Bulletin Boards** are also full of things ranging from musical equipment to household appliances. As students graduate and move away they are often anxious to get rid of all that furniture and those pots and pans rather than move them across the country (or world)!

## MAINTAINING A HOUSEHOLD

After moving in and getting set up, you'll need to control your monthly budget and cooperate with your roommates on things like food and other household expenses.

Here are some tips:

If you cooperate with your roommates on food purchase and preparation, work out a system in advance to keep things fair.

Respect your roommates' private space, including shelf space in kitchen and bathroom.

Clean up after yourself—nothing causes more fights among roommates than different tolerances for sloppiness.

Make a grocery list in advance to eliminate costly "impulse buying".

Eat before you shop. If you are hungry you will end up buying more.

Avoid buying meat or cheese that has been pre-sliced; it tends to spoil faster than whole pieces.

Buy supermarket or generic brands rather than "name" brands.

Avoid buying pre-packaged, ready to use or instant "convenience foods" - they are more expensive and often not as healthy

Eggs are an economical, highly nutritious meat substitute. Milk and cheese are inexpensive, nutritious foods.

Buy in large quantities and take advantage of sales.

If you have a land-line, check with your telephone service for extended calling privileges. If you call one or more toll areas frequently, rather than being charged per call, you can arrange to have unlimited calling privileges to some areas for a standard charge per month.

Direct distance dialing is the cheapest way to call long distance.

Clean your oven, range and refrigerator, and defrost your freezer regularly, at least once a quarter to save on utility bills.

Turn off lights when you leave a room.

Set thermostats on the furnace and water heaters to lower temperatures.

Don't over-heat or over-cool your apartment - both can be shockingly expensive.

Operate dishwasher only when full.

Be on the lookout for student discounts and use them. These are available for buses, movies, museums and stores.

Go to matinees and check local papers for discount nights at the movies. Don't keep a lot of cash on hand - you will spend it.

# MOVING OUT

## ALL THINGS MUST PASS

Moving out can be as complicated and stressful as moving in, but if you approach it the right way you should avoid most problems. If you do not, you may lose money and time. Here are some of the important procedures you should follow when it's time to move:

## CHECK FOR SIGNED RENTAL AGREEMENT

The agreement will specify the terms of your rental, including renewing, extending or terminating the rental. Don't wait until the lease expires to figure it out - staying past the agreed lease period without written consent of the owner makes you a holdover tenant. If you paid last month's rent when you moved in, don't "forget" and pay the last month's rent when you move out - you may have a hard time getting it back.

## NOTIFY YOUR LANDLORD/MANAGER IN WRITING

This must be done at least 30 days (or more - check your lease agreement) in advance of your moving date or you may still be held liable for rent. Make sure to keep a copy for yourself.

## HAVE YOUR LANDLORD/MANAGER INSPECT THE APARTMENT

If the landlord/manager refuses to inspect the premises in person in your presence or if you feel there may be a future dispute regarding the condition of your apartment, take pictures of the entire apartment after you have cleaned it.

## SETTLE ALL BALANCES

There may be miscellaneous charges due at the beginning of the last rental period.

## NOTIFY ALL UTILITY COMPANIES

Provide at least one week's notice to allow them to discontinue service and stop billing.

## REMOVE ALL TRASH AND PERSONAL BELONGINGS

Leave it the way you found it. Place furnishings in their original position. Clean all floors, bathrooms, closets, fixtures, kitchen utensils, etc. Your security deposit must be refunded to you within 21 days after you move out, but in order to get your full security deposit back it is your responsibility to leave the apartment in the same condition as when you moved in. The landlord may make deductions from your security deposit for unpaid rent, damages, and cleaning that is required.

## RETURN ALL KEYS

If you don't, you may be assessed a key replacement charge which can be expensive.

## LEAVE A FORWARDING ADDRESS

Notify the Post Office and the landlord to enable prompt return of your deposit.

# FAQs

## **Is Hollywood safe?**

The police and Hollywood security firms have improved overall security in the area, but Hollywood is still a BIG city so keep your eyes open and exercise common sense regarding when and where you walk, particularly when you are alone. If in doubt, spend the money on a cab or call a friend for a ride.

## **Where do I purchase home furnishings?**

Garage sales, MI advertisement boards, IKEA, used furniture stores, Craig's List.

## **What kind of clothes should I bring?**

LA has a moderate climate, but it can get surprisingly chilly in the winter and the temperature can drop quickly at night. In the winter (Dec-April), a medium jacket, long pants (and occasionally an umbrella) will be enough. Summer can be quite hot, but shorts and t-shirts are acceptable attire for almost any occasion.

## **How close are shopping centers?**

There are numerous grocery stores within a one-mile radius of MI and larger stores such as Kmart and Target are a short bus ride away.

## **How and where do I open a bank account?**

There are several local branches of nationwide banks. An account representative from Wells Fargo will be on campus during registration to help you open a bank account.

## **What's the difference between a single/studio apartment and a one-bedroom apartment?**

A studio apartment has a living space, kitchen, and a bathroom. A one-bedroom apartment has a bedroom, a living space, kitchen, and a bathroom.

## **What's the difference between a "studio" and a "bachelor" apartment?**

A studio apartment has a full kitchen while a bachelor has limited kitchen facilities.

## **How much do utilities cost?**

Some apartments include all utilities in the rent; most will include at least water and garbage. You can expect to pay for cable and telephone at all apartments. An average electric bill will be around \$50/mo. and an average gas bill will be around \$20/mo. Obviously, this is just an estimate.

## **Where do I live if I'm joining the three-month Encore program?**

Most apartments require at least a six-month lease. Occasionally you can find a month-to-month lease. Keep an eye on the rooms/apartments available list. This list is composed of current students (with apartments) looking for roommates. Other options are long-term stays at area hotels and hostels.

## **Does MI provide temporary housing?**

No, but we provide referrals and discounts to local hotels and hostels.

## **How do I get from the airport to Hollywood?**

Various shuttle companies offer one-way service to Hollywood for around \$25. If you are staying at local hostels they may reimburse you for your shuttle fee.

**How much is a typical rental deposit?**

You can expect to pay at least two months' rent (first and last) to get into an apartment; often a security/cleaning deposit is also required. Sometimes, if your credit is bad or you're an international student, apartment managers will require three month's rent up-front.

**Where do I store my stuff while looking for an apartment?**

There are many storage facilities in Los Angeles. We would recommend looking at some of the storage facilities in the Valley; they are significantly cheaper than Hollywood (check the yellow pages or internet).

**Do I need a co-signer on my leases?**

If you are under 21 years of age, you will probably need a co-signer on your apartment lease. If this is your first apartment, it is a good idea for your parents to help you out in your search.

**Can International Students lease apartments?**

Yes, but you may be required to pay a slightly higher deposit.

**How much is an apartment going to cost me?**

On average, a single room apartment or bachelor apartment will be about \$750 to \$1000 a month. One-bedrooms are about \$1000 to \$1400, and two bedrooms range from \$1400 to \$2000. In most buildings water, septic, and trash removal are paid for by the apartment building. You will usually only have to pay for gas and electricity, which is billed every other month. Most students average about \$40-\$60 per month for their utility bill. Don't forget to figure food costs into your budget.

**How do I find a roommate?**

Finding a roommate is easier than you think. Much like choosing an apartment, you should always meet someone before deciding to live with him or her. Your next question is probably, "How do I meet a potential roommate?" During Registration (the two weeks before school begins), the Housing Office conducts Roommate and Housing meetings. At these meetings, you can meet other students looking for roommates. You can also ask questions about housing and much more.

**Can I find a roommate before I get to LA?**

Of course you can! When you receive your acceptance package, you will find a "Roommate Questionnaire" enclosed. Fill it out, return it to MI, and your name will be placed on the "Roommate List." You will receive a copy of this list by email. We also have an on-line Roommate Referral service that you can access from the Musicians Institute website. You can use both Roommate lists as a means of finding potential roommates that may be from your hometown, nearby or other parts of the world. This way you won't have to do the "Big Move" alone. Both referral services are great resources for finding a suitable roommate but MI maintains the lists as a courtesy and does not investigate or guarantee the accuracy of the posted information. You should always meet a potential roommate in person before you decide to live with them.

**Can I live outside the Hollywood area?**

Sure! The San Fernando Valley is located just north of Hollywood, and is only a short car or bus ride from MI. It can be less expensive and more suburban in atmosphere and Metro service is available., but if you have a car keep in mind that traffic can be bad and parking in Hollywood is very expensive.

**What features do the buildings have?**

Many of the buildings in Hollywood have swimming pools, Jacuzzis, gyms or workout rooms, and saunas. Also, laundry facilities are usually available in most buildings. As for security, almost every building in Hollywood has a security entry system. Most of these are telephone system devices, so visitors must punch in a security code that either rings the telephone or security phone in your apartment so you can let them in. It's very efficient and convenient.

**When should I arrive in LA?**

You should really arrive in LA no later than the beginning of registration, but no earlier than four weeks before your scheduled start date. If you arrive too early, you may have some difficulty finding a place to live due to the fact that the previous class has not graduated yet. Keep in mind that there are plenty of apartments in Hollywood, but many will not have vacancies until the current class leaves. Arriving two weeks prior to the start of school is usually your best bet!

**Should I bring a car to LA?**

Unless you already have a car and plan on driving it to California as your means of getting here, it's not vital to have a car while you're at school. Contrary to popular myth, you can survive in LA without a car - you can go almost anywhere you want to go either by bus, taxi, or subway. Having a car can be nice, but insurance rates in LA are high and parking can be very expensive.

**If I do have a car, where can I park?**

A majority of apartment buildings have gated parking for tenants. At school you can park in the parking lot across the street from MI and receive an "MI Discount" (around \$75-\$85/month) on a monthly parking pass. There is also metered parking in the neighborhood, but parking enforcement is strict and fines are steep.

## Attention

Musicians Institute does not own or operate student housing and has no affiliation with any landlord or property owner. Housing information is provided for reference only and MI does not guarantee its accuracy. All agreements or contractual arrangements related to housing rental or lease are strictly between the student or other responsible party and the property owner or landlord. Rental prices are subject to change without notice and MI cannot guarantee their accuracy.

### Oakwood Corporate Apartments

3600 Barham Blvd.  
Los Angeles, CA 90068  
323-878-2100  
Lease Term: Monthly

Price:	Type:
\$1546.00 - \$1787.00	Studio
\$2242.00 - \$2483.00	Onebdm
\$2780.00 - \$3056.00	Twobdrm

### Hollywood Plaza Apartments

1758 N. Orange Dr.  
Los Angeles, CA 90028  
323-874-2973  
Lease Term: 1 year/Furnished

Price:	Type:
\$1100.00	Single
\$1350.00	Onebdm
\$0.00	Twobdrm

### Barnsdall Court Apartments

1632 N. Normandie Ave.  
Los Angeles, CA 90027  
323-906-1604  
Lease Term: 6 months - 1 year

Price:	Type:
\$729.00	Onebdm
\$871.00	Twobdrm
\$1001.00	Threebdm

### The Diplomat Apartments

1837 N. Whitley Ave.  
Los Angeles, CA 90028  
323-467-9000  
Lease Term: 6 months - 1 year

Price:	Type:
\$1050.00	Studio
\$1325.00-\$1425.00	Onebdm
\$1700.00-\$1800.00	Twobdrm
\$1450.00	Lofts

### Tivoli Square Apartments

1820 Whitley Ave.  
Los Angeles, CA 90028  
323-467-9000  
Lease Term: 6 months - 1 year

Price:	Type:
\$1050.00	Studio
\$1325.00-\$1425.00	Onebdm
\$1700.00-\$1800.00	Twobdrm
\$1450.00	Loft

### The Milan Apartments

6600 Yucca St.  
Los Angeles, CA 90028  
323-467-9000  
Lease Term: 6 months - 1 year

Price:	Type:
\$1050.00	Studio
\$1325.00 - \$1425.00	Onebdm
\$1700.00-\$1800.00	Twobdrm
\$1450.00	Loft

### The Monaco Apartments

1823 N. Grace Ave.  
Los Angeles, CA 90028  
323-467-9000  
Lease Term: 6 months - 1 year

Price:	Type:
\$1050.00	Studio
\$1325.00-\$1425.00	Onebdm
\$1700.00-\$1800.00	Twobdrm
\$1450.00	Loft

### Normandie Park Place

1610 Normandie Ave.  
Los Angeles, CA 90027  
323-913-0788  
Lease Term: 1 year

Price:	Type:
\$850.00	Bachelor
\$950-\$975	Studio
\$1350.00	Onebdm

**Attention**

**Musicians Institute does not own or operate student housing and has no affiliation with any landlord or property owner. Housing information is provided for reference only and MI does not guarantee its accuracy. All agreements or contractual arrangements related to housing rental or lease are strictly between the student or other responsible party and the property owner or landlord. Rental prices are subject to change without notice and MI cannot guarantee their accuracy.**

**El Cerrito Apartments**

1805 N. El Cerrito Pl.  
Hollywood, CA 90068  
323-969-0429  
Lease Term: 6 months

Price: \$1100.00-\$1250.00  
\$1300.00-\$1450.00  
\$1925.00  
Type: Studio  
Onebdrm  
Twobdrm

**The Sands Apartments**

7220 Hollywood Blvd.  
Hollywood, CA 90046  
323-874-6186  
Lease Term: 1 year

Price: \$895.00  
\$995.00  
\$0.00  
Type: Studio  
Onebdrm  
Twobdrm

**Sycamore Villa Apartments**

1320/1321 N. Sycamore Ave.  
Hollywood, CA 90028  
323-466-9173  
Lease Term: 6 months

Price: \$1175.00 - \$1225.00  
\$1300.00 - \$1575.00  
\$1650.00 - \$2000.00  
Type: Studio  
Onebdrm  
Twobdrm

**Las Palmas Villa Apartments**

2039 N. Las Palmas Ave.  
Hollywood, CA 90028  
323-969-0722  
Lease Term: 6 months - 1 year

Price: \$1250.00  
\$1350.00  
\$1750.00  
Type: Studio  
Onebdrm  
Twobdrm

**Sunshine City Apartments**

4141 Santa Monica Blvd.  
Los Angeles, CA 90029  
323-668-9119  
Lease Term: Monthly - 1 year

Price: \$750.00  
\$0.00  
\$0.00  
Type: Studio  
Onebdrm  
Twobdrm

**Chateau De Fleur Apartments**

6626 Franklin Ave.  
Hollywood, CA 90028  
323-469-2961  
Lease Term: 6 months - 1 year

Price: \$1125.00  
\$1595.00  
\$0.00  
Type: Studio  
Onebdrm  
Twobdrm

**Hollywood Terrace Apartments**

6550 Yucca St.  
Hollywood, CA 90028  
323-469-5782  
Lease Term: 1 year

Price: \$0.00  
\$0.00  
\$1650.00  
Type: Studio  
Onebdrm  
Twobdrm

**Hollywood Towers**

6200 Franklin Ave.  
Hollywood, CA 90028  
323-466-6524  
Lease Term: 1 year

Price: \$1500.00  
\$1830.00  
\$2500.00  
\$3000.00  
Type: Bchr  
Studio  
Onebdrm  
Twobdrm

**Attention**

**Musicians Institute does not own or operate student housing and has no affiliation with any landlord or property owner. Housing information is provided for reference only and MI does not guarantee its accuracy. All agreements or contractual arrangements related to housing rental or lease are strictly between the student or other responsible party and the property owner or landlord. Rental prices are subject to change without notice and MI cannot guarantee their accuracy.**

**Mediterranean Apartments**

1776 N. Sycamore Ave.  
Hollywood, CA 90028  
323-874-5140  
Lease Term: 1 year

Price:	Type:
\$800.00-\$900.00	Bchlr
\$1000.00-\$1100.00	Studio
\$1200.00	Onebdrm
\$1140.00	Twobdrm

**Hollyview Apartments**

1737 N. Orange Dr.  
Hollywood, CA 90028  
323-874-4578  
Lease Term: 1 year

Price:	Type:
\$0.00	Studio
\$1500.00	Onebdrm
\$0.00	Twobdrm

**Hollywood Biltmore**

1745 N. Orange Dr.  
Hollywood, CA 90029  
323-512-8891  
Lease Term: 1 year  
Utilities included

Price:	Type:
\$995.00	Bachelor
\$1200.00	Studio
\$1325.00-\$1500	Onebdrm

**Westbury Apartments**

1765 Sycamore Ave.  
Hollywood, CA 90028  
323-874-9909  
Lease Term: 1 year

Price:	Type:
\$985.00	Studio
\$1150.00	Onebdrm
\$1750.00	Twobdrm

**Sycamore Terrace**

1750 Sycamore Ave.  
Hollywood, CA 90028  
323-969-8877  
Lease Term: 1 year

Price:	Type:
\$950.00	Studio
\$1175.00	Onebdrm
\$1550.00	Twobdrm

**Franklin Manor Apartments**

7104 Franklin Ave.  
Hollywood, CA 90046  
323-850-3282  
Lease Term: 1 year

Price:	Type:
\$1050.00-\$1195.00	Studio
\$1295.00-\$1395.00	Onebdrm
\$0.00	Twobdrm

**El Cerrito Place Apts.**

1780 El Cerrito Pl.  
Hollywood, CA 90028  
323-850-3282  
Lease Term: 1 year

Price:	Type:
\$1050.00-\$1195.00	Studio
\$1295.00-\$1395.00	Onebdrm
\$0.00	Twobdrm

**Hillside Apts.**

7215 Hillside  
Hollywood, CA 90028  
323-493-4227  
Lease Term: 1 year

Price:	Type:
\$1400.00	Studio
\$1600.00	Onebdrm
\$2200.00	Twobdrm

**Attention**

**Musicians Institute does not own or operate student housing and has no affiliation with any landlord or property owner. Housing information is provided for reference only and MI does not guarantee its accuracy. All agreements or contractual arrangements related to housing rental or lease are strictly between the student or other responsible party and the property owner or landlord. Rental prices are subject to change without notice and MI cannot guarantee their accuracy.**

**Lockwood Apartments**

4246 Lockwood Ave.  
Hollywood, CA 90029  
323-660-7707  
Lease Term: 1 year

Price:	Type:
\$0.00	Studio
\$900.00	Onebdrm
\$1250.00	Twobdrm

**Hollywood Arms Apartments**

6434 Yucca St.  
Hollywood, CA 90029  
323-463-9217  
Lease Term: 1 year

Price:	Type:
\$950.00	Bachelor
\$1100.00	Studio
\$1395.00	Onebdrm

**Orange Apartments**

1769 N. Orange Dr.  
Hollywood, CA 90028  
323-876-8156  
Lease Term: 6 months

Price:	Type:
\$1100.00	Studio
\$0.00	Onebdrm
\$0.00	Twobdrm

**Le Mirage Apartments**

1220 Las Palmas Ave.  
Hollywood, CA 90028  
323-463-3229  
Lease Term: 1 year

Price:	Type:
\$0.00	Studio
\$950.00	Onebdrm
\$1300.00	Twobdrm

**Yucca Villa**

6765 Yucca St.  
Hollywood, CA 90028  
323-469-9402  
Lease Term: Monthly - 6 months - 1 year

Price:	Type:
\$950.00-\$1050.00	Studio
\$1200.00	Onebdrm
\$0.00	Twobdrm

**Orchid Apartment**

1772 N. Orchid St.  
Hollywood, CA 90028  
323-465-7680  
Lease Term: Monthly - 6 months - 1 year  
Utilities included

Price:	Type:
\$700.00	Bachelor
\$900.00	Studio
\$1050.00 - \$1100	Onebdrm
\$0.00	Twobdrm

**Cahuenga Luxury Apartments**

2104 N. Cahuenga Blvd.  
Hollywood, CA 90046  
323-962-5479  
Lease Term: 6 months - 1 year

Price:	Type:
\$0.00	Studio
\$0.00	Onebdrm
\$1850.00 - \$1975.00	Twobdrm

**The Meridian**

1223 Las Palmas Ave.  
Hollywood, CA 90028  
323-463-9653  
Lease Term: 1 year

Price:	Type:
\$0.00	Studio
\$1330.00-\$1450.00	Onebdrm
\$1640.00-\$1750.00	Twobdrm/Loft

**Attention**

**Musicians Institute does not own or operate student housing and has no affiliation with any landlord or property owner. Housing information is provided for reference only and MI does not guarantee its accuracy. All agreements or contractual arrangements related to housing rental or lease are strictly between the student or other responsible party and the property owner or landlord. Rental prices are subject to change without notice and MI cannot guarantee their accuracy.**

**Joshua Apartments**

1353 N. Martel Ave.  
Hollywood, CA 90028  
323-851-4141  
Lease Term: 6 months

Price:	Type:
\$ 0.00	Studio
\$1350-\$1495.00	Onebdrm
\$1175.00-1295.00	Jr. Onebdrm
\$1750.00-\$1895.00	Twobdrm

**Poinsettia Apartments**

1530 N. Poinsettia Pl.  
Los Angeles, CA 90046  
323-851-3212  
Lease Term: 1 year

Price:	Type:
\$1550.00	Studio
\$1670.00	Onebdrm
\$2515.00	Twobdrm

**Serravella Apartments**

1710 N. Fuller Ave.  
Hollywood, CA 90028  
323-850-1710  
Lease Term: 6 months - 1 year

Price:	Type:
\$1800.00+	Studio
\$1999.00+	Onebdrm
\$2800.00+	Twobdrm

**Cherokee Apartments**

1733 N. Cherokee Ave.  
Hollywood, CA 90028  
323-467-3874  
Lease Term: 1 year

Price:	Type:
\$900.00- \$1200.00	Studio
\$0.00	Onebdrm
\$0.00	Twobdrm

**La Leyenda Apartments**

1737 N. Whitley Ave.  
Hollywood, CA 90028  
323-465-4422  
Lease Term: 6 months

Price:	Type:
\$1095.00-\$1350.00	Studio
\$1595.00-\$1625.00	Onebdrm
\$0.00	Twobdrm

**Sycamore Apartments**

1134 Sycamore Ave.  
Hollywood, CA 90038  
323-931-5746  
Lease Term: 1 year

Price:	Type:
\$0.00	Studio
\$1050.00-1400.00	Onebdrm
\$0.00	Twobdrm

**Portobello Apartments**

1791 N. Sycamore Ave.  
Hollywood, CA 90028  
323-850-0944  
Lease Term: 1 year

Price:	Type:
\$795.00	Studio
\$900.00-\$950.00	Onebdrm
\$1225.00-\$1350.00	Twobdrm

**McCadden Apartments**

1523 N. McCadden Pl.  
Hollywood, CA 90028  
323-871-0206  
Lease Term: 6 months

Price:	Type:
\$950.00	Studio
\$1100.00	Onebdrm
\$ 0.00	Twobdrm

**Attention**

**Musicians Institute does not own or operate student housing and has no affiliation with any landlord or property owner. Housing information is provided for reference only and MI does not guarantee its accuracy. All agreements or contractual arrangements related to housing rental or lease are strictly between the student or other responsible party and the property owner or landlord. Rental prices are subject to change without notice and MI cannot guarantee their accuracy.**

**Hill View**

6531 Hollywood Blvd.  
Hollywood, CA 90028  
323-464-4140  
Lease Term: 1 year

Price:	Type:
\$1680.00-\$1880.00	Studio
\$1995.00	Onebdrm
\$3000.00-\$3690.00	Twobdrm

**The Havenhurst**

1861 N. Whitley Ave.  
Los Angeles, CA 90028  
323-465-4723  
Lease Term: 1 year

Price:	Type:
\$895.00	Bachelor
\$1050.00	Single
\$1495.00	Onebdrm

**The Fontenoy**

1811 N. Whitley Ave.  
Hollywood, CA 90028  
323-957-5679  
Lease Term: 1 year

Price:	Type:
\$850.00	Bachelor
\$1185.00	Single
\$0.00	Onebdrm

**The Fleur De Lis**

1825 N. Whitley Ave.  
Hollywood, CA 90028  
323-466-2749  
Lease Term: 1 Year

Price:	Type:
\$795.00	Bachelor
\$1050.00	Studio
\$0.00	Onebdrm

**Franklin Pointe Apartments**

1825 N. Cherokee Ave.  
Hollywood, CA 90028  
323-461-6504  
Lease Term: 1 year

Price:	Type:
\$1250.00	Studio
\$1550.00	Onebdrm
\$1995.00	Twobdrm

**Hollywood Regis Apartments**

7320 Hawthorn Ave.  
Hollywood, CA 90046  
323-874-3801  
Lease Term: 6 months- 1 year

Price:	Type:
\$0.00	Studio
\$975.00-\$1275.00	Onebdrm
\$1300.00-\$2050.00	Twobdrm

**Cassil Place**

1525 Cassil Place  
Hollywood, CA 90028  
310-621-4554  
Lease Term: 1 year

Price:	Type:
\$1000.00-\$1050.00	Studio
\$0.00	Onebdrm
\$0.00	Twobdrm

**Kaitlin Court**

1340 N. Poiusetia Place  
Hollywood, CA 90028  
323-851-9453  
Lease Term: 1 year

Price:	Type:
\$1310.00-\$1345.00	Studio
\$1380.00-\$1430.00	Onebdrm
\$0.00	Twobdrm

# Homestays for Students

**Universal Student Housing** - Universal Student Housing is dedicated to providing economical homestays for international and domestic students.

**Global Student Services** - GLOBAL STUDENT SERVICES, USA has been dedicated to providing a 'home away from home' to international (as well as national) students staying in the Los Angeles area while attending school. For more information, please go to [www.global-student-service.com](http://www.global-student-service.com)

**IHPS** - Economical homestays available in the Los Angeles and San Diego areas for international travelers and students. To learn more, please visit [IHPSLA.com](http://IHPSLA.com)

**Global Immersions Inc.** - Global Immersions, Inc. is an Intercultural Services company that specializes in homestay living, cross-cultural training, customized business English language training for foreign executives and total immersion cultural travel programs. Their website is [www.globalimmersions.com](http://www.globalimmersions.com)

**Homestay in LA** - Homestay in LA offers affordable accommodations in the clean and desirable neighborhoods of West Los Angeles, Beverly Hills, Culver City, Venice, Santa Monica and in the Hollywood area. For more information call (310) 777-8318 or visit [www.homestayinla.com](http://www.homestayinla.com)

## Phone Listing

### **Legal Aid Foundation of Los Angeles**

1102 S. Crenshaw Blvd.  
Los Angeles, CA 90019-3111  
(800) 399-4529

### **Eviction Defense Center**

1550 W. 8th St.  
Los Angeles, CA 90022  
(213) 640-3881

1640 5th St., Suite 124  
Santa Monica, CA 90401  
(310) 899-6200

### **Los Angeles Housing Dept.**

3550 W. 7th St.. 1st floor  
Los Angeles, CA 90017  
(866) 557-RENT

### **Fair Housing Council**

8134 Van Nuys Blvd.  
Panorama City, CA 91402  
(818) 373-1185

520 S. Virgil Ave #400  
Los Angeles, CA 90020  
(213) 387-8400

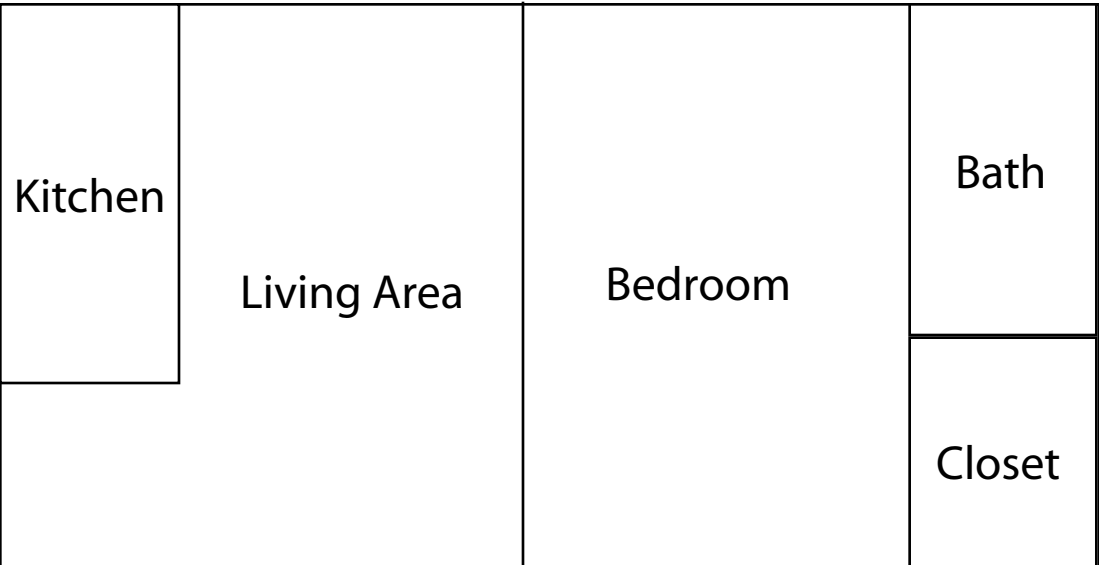


**There are sometimes questions about the difference between a studio and a one-bedroom apartment. Here is a diagram describing both...**

**Studio**



**One Bedroom**



# Management Companies

You should first contact the numbers listed in the Apartment Listings section. Only contact the management companies if you cannot find an apartment.

**MGGS Properties**

4107 Los Feliz Blvd.  
Los Angeles, Ca 90028  
(323) 661-1752

**Hilder Property Management**

7805 W. Sunset Blvd.  
Los Angeles, CA 90028  
(323) 850-5755

**Las Palmas Management**

1210 N. Las Palmas Ave.  
Los Angeles, Ca 90028  
(323) 461-9199

**Raford Management**

5858 Hollywood Blvd.  
Los Angeles, CA 90028  
(323) 466-7111

**Leeds Property Management**

3385 Overland Ave.  
Los Angeles, CA 90034  
(310) 462-6227  
[www.leedspm.com](http://www.leedspm.com)

**CIM Hollywood**

6922 Hollywood Blvd. 9th floor  
Los Angeles, CA 90028  
(323) 860-4900  
[www.cimgroup.com](http://www.cimgroup.com)

**Trocadero Management**

6700 Franklin Pl.  
Los Angeles, CA 90028  
(323) 462-6227

**LRA Property Management Inc.**

1288 N. Verdugo Rd.  
Glendale, CA 91206  
(818) 246-6656

**Los Feliz Ltd.**

3949 Los Feliz Blvd.  
Los Angeles, CA 90078  
(323) 660-9115

**May Hane Group**

4141 Santa Monica Blvd #317  
Los Angeles, CA 90036  
(323) 668-9119

**Artiste Apartments**

PO Box 2109  
Hollywood, CA 90078  
(323) 692-5736  
[www.artisteapartments.com](http://www.artisteapartments.com)

**Alliance Property Management**

10810 W. Washington Blvd.  
Culver City, CA 90232  
(310) 837-2500  
[www.alliancela.com](http://www.alliancela.com)

**Notes:**

**Notes:**